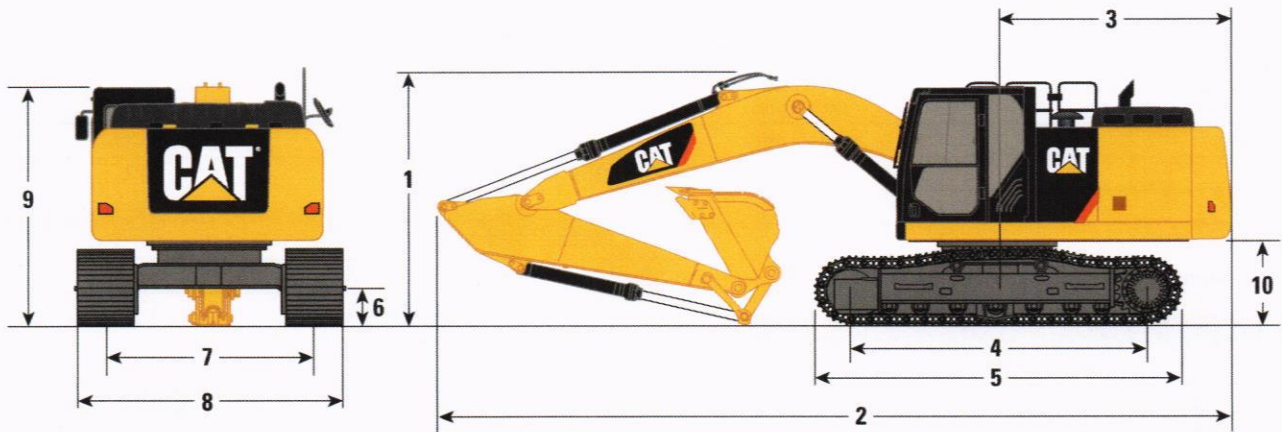


# 326F L/F LN Hydraulic Excavator Specifications

## Dimensions

All dimensions are approximate.



Boom Options	Reach Boom 5.9 m		Variable Angle Boom (2.8 m Stub + 3.3 m Fore)		Super Long Reach Boom 10.2 m
Stick Options	R2.95CB1	R2.5CB1	R2.95CB1	R2.5CB1	Super Long Reach 7.85 m
<b>1</b> Shipping Height*	3220 mm	3410 mm	3120 mm	3120 mm	3230 mm
<b>2</b> Shipping Length	10 060 mm	10 100 mm	10 200 mm	10 200 mm	14 350 mm
<b>3</b> Tail Swing Radius	3000 mm	3000 mm	3000 mm	3000 mm	3000 mm
<b>4</b> Length to Center of Rollers					
Long Undercarriage	3830 mm	3830 mm	3830 mm	3830 mm	3830 mm
Long Narrow Undercarriage	3830 mm	3830 mm	3830 mm	3830 mm	3830 mm
<b>5</b> Track Length					
Long Undercarriage	4640 mm	4640 mm	4640 mm	4640 mm	4640 mm
Long Narrow Undercarriage	4640 mm	4640 mm	4640 mm	4640 mm	4640 mm
<b>6</b> Ground Clearance**	440 mm	440 mm	440 mm	440 mm	440 mm
<b>7</b> Track Gauge					
Long Undercarriage	2590 mm	2590 mm	2590 mm	2590 mm	2590 mm
Long Narrow Undercarriage	2390 mm	2390 mm	2390 mm	2390 mm	2390 mm
<b>8</b> Transport Width					
Long Undercarriage – 600 mm Shoes	3190 mm	3190 mm	3190 mm	3190 mm	3190 mm
Long Undercarriage – 790 mm Shoes	3380 mm	3380 mm	3380 mm	3380 mm	3380 mm
Long Undercarriage – 900 mm Shoes	3490 mm	3490 mm	3490 mm	3490 mm	3490 mm
Long Narrow Undercarriage – 600 mm Shoes	2990 mm	2990 mm	2990 mm	2990 mm	2990 mm
<b>9</b> Cab Height*	3000 mm	3000 mm	3000 mm	3000 mm	3000 mm
<b>10</b> Counterweight Clearance**	1060 mm	1060 mm	1060 mm	1060 mm	1060 mm
<b>Bucket Type</b>	HD	HD	HD	HD	GD
<b>Tip Radius</b>	1650 mm	1650 mm	1650 mm	1650 mm	1225 mm

\*Including shoe lug height.

\*\*Without shoe lug height.

Dimensions may vary depending on bucket selection.

## 326F L/F LN Hydraulic Excavator Specifications

### Engine

Engine Model	Cat C7.1 ACERT
Power – SAE J1995 (metric)	152 kW (207 PS)
Power – ISO 14396 (metric)	152 kW (207 PS)
Power – ISO 9249 (metric)	149 kW (203 PS)
Engine rpm	
Operation	1,600 rpm
Travel	1,800 rpm
Bore	105 mm
Stroke	135 mm
Displacement	7.01 L

• Power rating at 1,800 rpm.

### Hydraulic System

Main System – Maximum Flow (Total)	508 L/min
Maximum Pressure – Equipment Heavy Lift	38 000 kPa
Maximum Pressure – Equipment Normal	35 000 kPa
Maximum Pressure – Travel	37 000 kPa
Maximum Pressure – Swing	27 400 kPa
Pilot System – Maximum Flow	30 L/min
Pilot System – Maximum Pressure	4100 kPa
Boom Cylinder – Bore	135 mm
Boom Cylinder – Stroke	1305 mm
Stick Cylinder – Bore	140 mm
Stick Cylinder – Stroke	1660 mm
CB1 Bucket Cylinder – Bore	130 mm
CB1 Bucket Cylinder – Stroke	1155 mm

### Drive

Maximum Gradeability	35°/70%
Maximum Travel Speed	5.3 km/h
Maximum Drawbar Pull	226 kN

### Swing Mechanism

Swing Speed	9.0 rpm
Maximum Swing Torque	94 kN·m

### Service Refill Capacities

Fuel Tank Capacity	520 L
Cooling System	30 L
Engine Oil (with filter)	24 L
Swing Drive (each)	9 L
Final Drive (each)	6 L
Hydraulic System Oil (including tank)	285 L
Hydraulic Tank Oil	175 L
DEF Tank	41 L

### Track

Number of Shoes (each side)	51
Number of Track Rollers (each side)	8
Number of Carrier Rollers (each side)	2

### Sound Performance

Exterior Sound Power Level – ISO 6395:2008	103 dB(A)*
Operator Sound Pressure Level – ISO 6396:2008	71 dB(A)

- Hearing protection may be needed when operating with an open operator station and cab (when not properly maintained or doors/windows open) for extended periods or in a noisy environment.
- When properly installed and maintained, the cab offered by Caterpillar, when tested with doors and windows closed according to ANSI/SAE J1166 OCT98, meets requirements for operator sound exposure limits in effect at time of manufacture.

\* As per European Union Directive 2000/14/EC as amended by 2005/88/EC.

### Standards

Brakes	ISO 10265:2008
Cab/FOGS	ISO 10262:1998
Cab/ROPS	ISO 12117-2:2008

### Air Conditioning System

The air conditioning system on this machine contains the fluorinated greenhouse gas refrigerant R134a (Global Warming Potential = 1430). The system contains 1 kg of refrigerant which has a CO<sub>2</sub> equivalent 1.43 metric tonne.